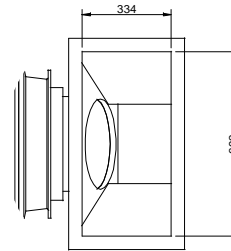
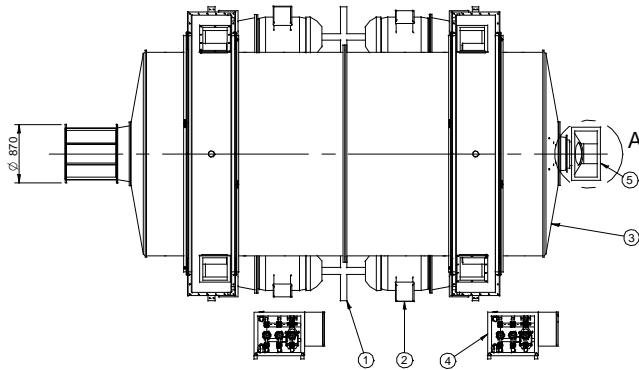
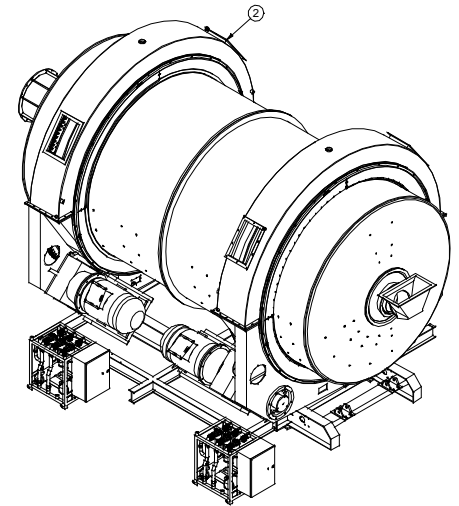


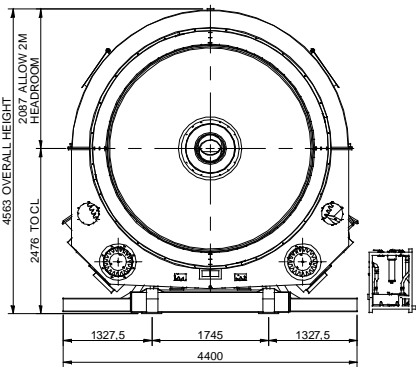
DO NOT SCALE



DETAIL A
1:10

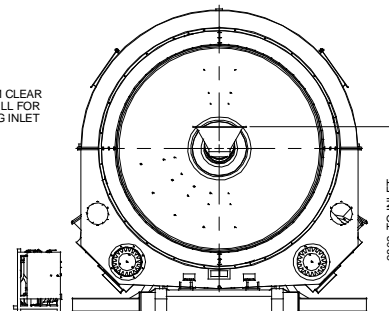
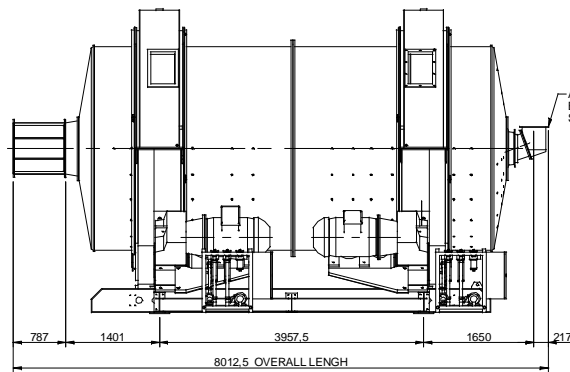


1:40



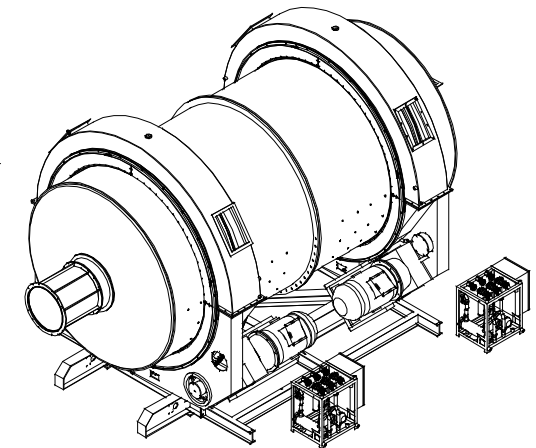
LOADS ON PLINTH UNDER DISCHARGE BEARING

DEAD LOAD : TBA KN
ROTATING LOAD : TBA KN
PROCESS LOAD : TBA KN

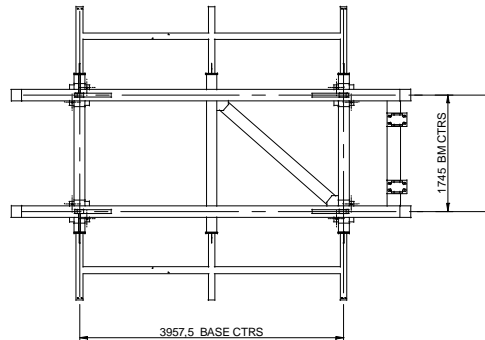


LOADS ON PLINTH UNDER FEED BEARING

DEAD LOAD : TBA KN
ROTATING LOAD : TBA KN
PROCESS LOAD : TBA KN



1:40



TOP VIEW BASE STRUCT

- NOTES
1. MILL BI-DIRECTIONAL AT 17.5 RPM
2. PLINTH DEPTH TO BE DESIGNED TO SUIT GROUND CONDITION
3. TOTAL INSTALLED POWER 640 KW

Item Number	Document Number	Title	Quantity	Mass
1	08-0066-5024	BASE FRAME ASSEMBLY	1	3941.5 kg
2	08-0045-4052	DRIVE ASSEMBLY	2	16922.0 kg
3	08-0066-4002	SHELL ASSEMBLY	1	35419.8 kg
4	05-0033-5092	LUBE SYSTEM	2	314.6 kg
5	08-0066-5005	INLET BEND	1	86.8 kg

REFERENCE	DESCRIPTION	DATE	CHECK	NO.	DESCRIPTION	DATE	CHECK	TOLERANCES				DRAWN		DT		MATERIAL	
								ABOVE	INCL	MACH	FABR	CAS	DATE	BY	DATE		BY
								0.5	3	0.1	-	-	2008	10/14			
								3	6	0.1	1	1	2008				
								6	30	0.2	1.5	2	2008				
								30	120	0.3	2.5	3	2008				
								120	315	0.5	3	5	2008				
								315	1000	0.8	4	6.5					
								1000	2000	1.2	4.5	7					
								2000	1500	1.5	5	7.5					

MechProTech (Pty) Ltd.
Mechanical Product and Technology Development for Industry

3M DIAMETER X 6M OVERFLOW BALL MILL CW 740 KW DRIVE

SCALE: 1:40 DRG NO: A1-08-0066-4012 REV: 0 SHEET 1 OF 1