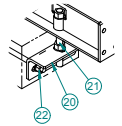
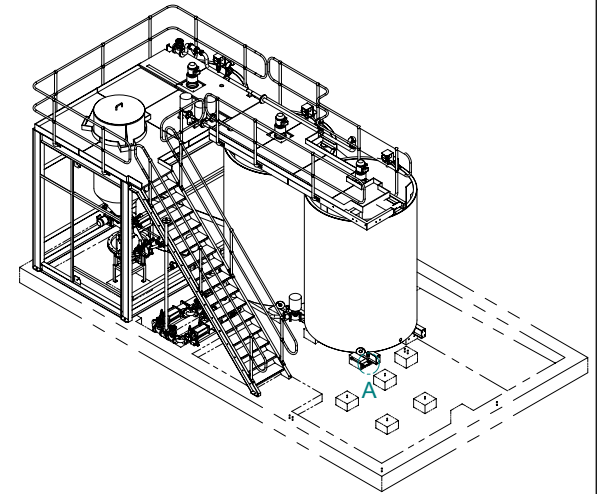
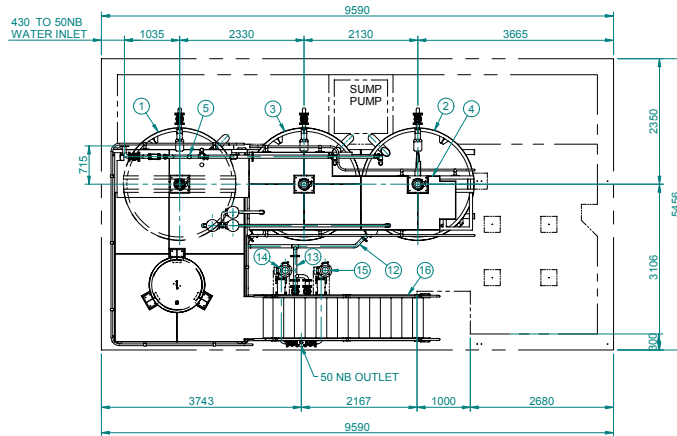
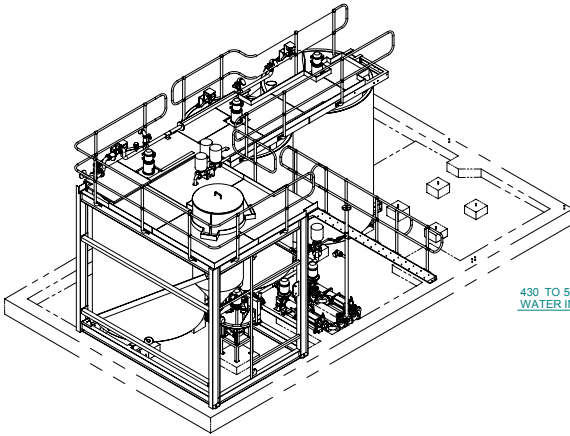
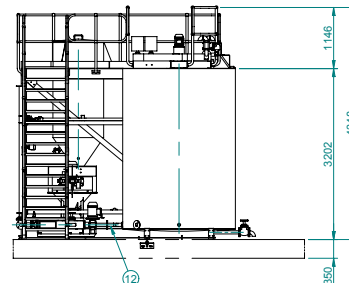
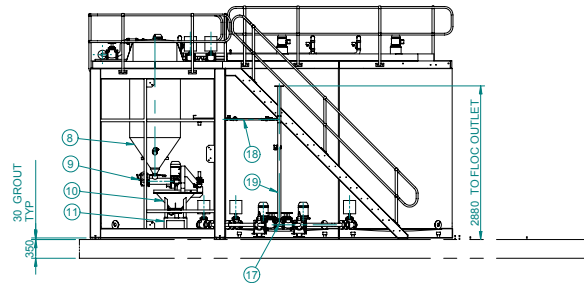
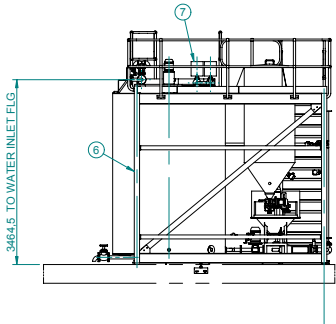


DO NOT SCALE



DETAIL A
1:10



Item No	Document Number	Title	Qty	Mass
1	06-0052-0007	TANK ASSEMBLY - RHS	1	1325.5 kg
2	06-0052-0008	TANK ASSEMBLY LHS	1	1663.4 kg
3	06-0052-0009	TANK ASSEMBLY - RHS OPP	1	1325.5 kg
4	06-0052-0085	WALKWAY ASSEMBLY	1	639.4 kg
5	06-0052-0020	WATER INLET PIPING ASSY	1	32.7 kg
6	06-0052-0172	STRUCTURE ASSEMBLY	1	2694.1 kg
7	06-0052-0105	DISTRIBUTION PIPE ASSY	1	103.4 kg
8	06-0052-0066	REAGENT BIN ASSY	1	208.4 kg
9	06-0052-0049	SCREW FEEDER ASSY	1	48.2 kg
10	06-0052-0078	EDUCTOR ASSEMBLY	1	196.0 kg
11	04-0064-0069	EDUCTOR STAND	1	0.0 kg
12	06-0055-0015	HYDRATED REAGENT TANK PIPE	1	20.0 kg
13	RP-0004-0001	INLET MANIFOLD	1	7.2 kg
14	06-0052-0030	PUMP ASSEMBLY - OPP HAND	1	211.5 kg
15	06-0052-0030	PUMP ASSEMBLY	1	211.0 kg
16	06-0052-0080	STAIRWAY ASSEMBLY	1	342.1 kg
17	RP-0009-0010	50 NB FLANGED TEE	1	5.2 kg
18	06-0052-0302	POST DILUTION PIPING ASSY	1	5.3 kg
19	06-0052-0160	SUPPLY PIPING ASSEMBLY	1	16.2 kg
20	RP-0020-0001	FOUNDATION BRACKET	12	39.4 kg
21	RP-0020-0002	FOUNDATION BOLT ASSY	12	16.2 kg
22	RP-0020-0003	FOUNDATION BOLT	24	25.5 kg

FOR PIPING & INSTRUMENTATION SEE DRAWING A1-06-0052-0002

- NOTES
1. ALL FASTENERS GR 8.8 HOT DIP GALVANISED
 2. ALL MOTORS 200V 50HZ 50/60 CAST IRON WEGE
 3. ALL SOLENOIDS 24V DC
 4. ALL INSTRUMENTATION POWER 24 V DC IF POSSIBLE OTHERWISE 110 V AC
 5. ALL INTERFACE FLANGES TO SUIT BS EN 1092 FLANGES
 6. ALL EXTERNAL PLANTWORK AND STRUCTURE CARBOLINE 187 HFP PRIMER 125 MICRON WHITE & 187 HFP FINISH GREY
 7. ALL INTERNAL PLANTWORK CARBOLINE 187 HFP PRIMER 125 MICRON GREY & 187 HFP FINISH 125 MICRON - WHITE
 8. ALL PIPE WORK GALVANISED TO SABS ISO 1461
 9. ALL WALKWAY GRATING HDG TO SABS ISO 1461 RS 40 WITH 30MM BEARER BARS & 300X KICK FLATS
 10. ALL HANDRAILS GALVANISED AND WELDED AT JOINTS FOLLOWED BY COLD GALV OVER WELDED AREAS

REFERENCE	NO.	DESCRIPTION	DATE	CHECK	TOLERANCES	DRAWN	DT	MATERIAL
					ABOVE		2006/09/29	
					0.5	3	0.1	-
					3	6	0.1	1
					6	30	0.2	1.5
					30	120	0.3	2.5
					120	315	0.5	3
					315	1000	0.8	4
					1000	2000	1.2	4.5
					2000	5150	1.5	5

REVISIONS	NO.	DESCRIPTION	DATE	CHECK
	2	PAINING WAS SIGMADUR	25-04-07	DT
	1	FOUNDATION BOLTING & POST DILUTION ASSY SHOWN	20-02-07	DT

MechProTech (Pty) Ltd.
Mechanical Product and Technology Development for Industry

HYDRAMIX HI RATE 3x10 REAGENT HYDRATOR GENERAL ASSEMBLY

SCALE: 1:50 DRWG NO: **A1-06-0052-0001** SHEET 1 OF 1