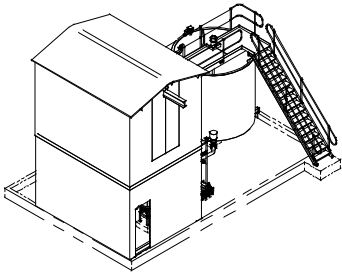
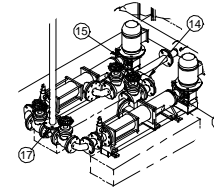
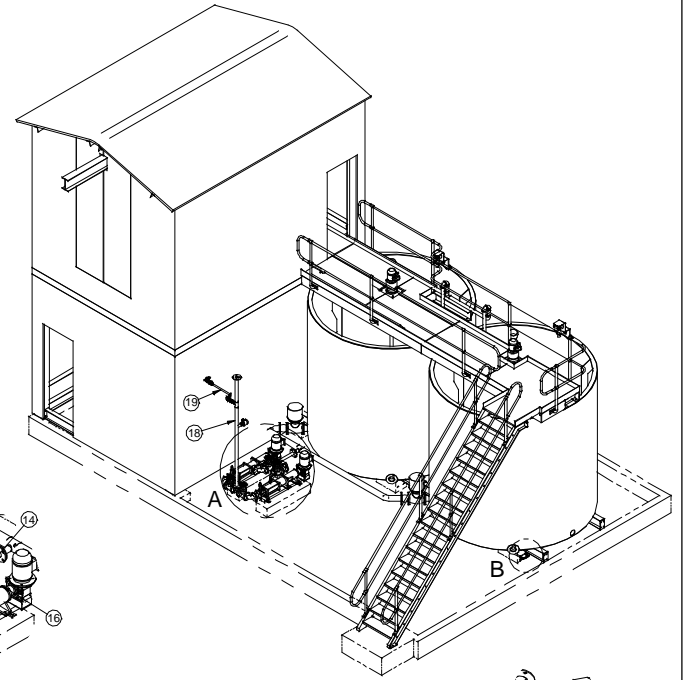
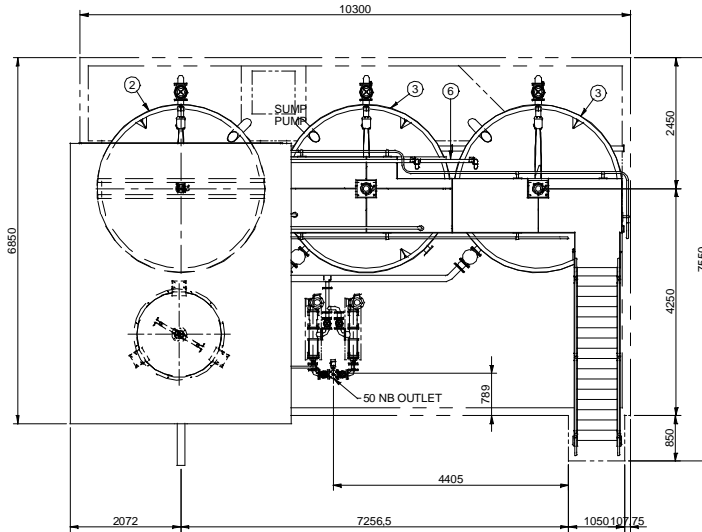


DO NOT SCALE



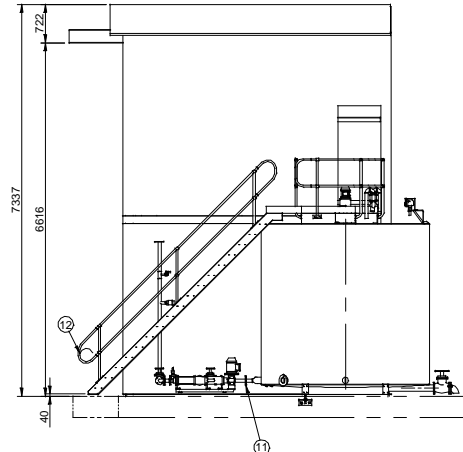
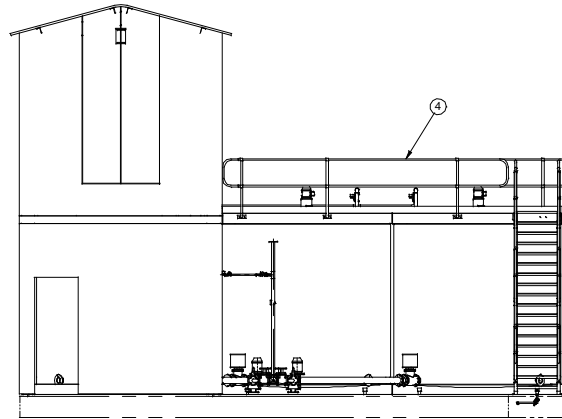
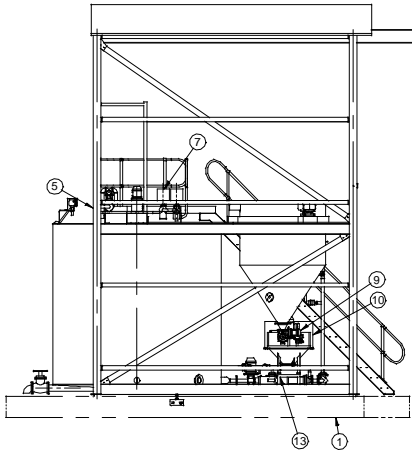
1:100



DETAIL A  
1:25



DETAIL B  
1:20



Item No	Document Number	Title	Qty	Mass
1	06-0055-0004	CIVILS	1	26332.9 kg
2	07-0005-0007	TANK ASSEMBLY - RHS	1	1325.5 kg
3	07-0005-0008	TANK ASSEMBLY LHS	2	3326.8 kg
4	06-0055-0085	WALKWAY ASSEMBLY	1	639.4 kg
5	06-0055-0172	STRUCTURE ASSEMBLY	1	2694.1 kg
6	06-0055-0020	WATER INLET PIPING ASSY	1	32.7 kg
7	06-0055-0105	DISTRIBUTION PIPE ASSY	1	103.4 kg
8*	06-0055-0066	REAGENT BIN ASSY	1	208.4 kg
9	06-0055-0049	SCREW FEEDER ASSY	1	48.2 kg
10	06-0055-0078	EDUCTOR ASSEMBLY	1	196.0 kg
11	07-0005-0015	HYDRATED REAGENT TANK PIPE	1	63.3 kg
12	06-0052-0080	STAIRWAY ASSEMBLY	1	342.1 kg
13	06-0055-0069	EDUCTOR STAND	1	0.0 kg
14	RP-0004-0001	INLET MANIFOLD	1	7.2 kg
15	06-0055-0030	PUMP ASSEMBLY - OPP HAND	1	211.5 kg
16	06-0055-0030	PUMP ASSEMBLY	1	1293.9 kg
17	RP-0009-0010	50 NB FLANGED TEE	1	5.2 kg
18	06-0055-0160	FLOC SUPPLY PIPE ASSY	1	
19	06-0055-0302	POST DILUTION PIPING ASSY	1	
20*	RP-0020-0001	FOUNDATION BRACKET	12	39.4 kg
21*	RP-0020-0002	FOUNDATION BOLT ASSY	12	16.2 kg
22*	RP-0020-0003	FOUNDATION BOLT	12	12.7 kg

FOR PIPING & INSTRUMENTATION SEE DRAWING A1-08-0048-0002

- NOTES  
 1. ALL FASTENERS GR 8.8 HOT DIP GALVANISED  
 2. ALL MOTORS 380 V 3-PHASE  
 3. ALL CONTROL CIRCUITS 24V DC  
 4. ALL INSTRUMENTATION 24V DC

REFERENCE	NO.	DESCRIPTION	DATE	CHECK	TOLERANCES		DRAWN		DT		MATERIAL
					ABOVE	BELOW	INCL	MACH	FABR	CAST	
					0.5	3	0.1	-	-	2007/08/22	
					3	6	0.1	1	1	CHECKED	
					6	30	0.2	1.5	2	ENGINEER	
					30	120	0.3	2.5	3	DATE	2007
					120	315	0.5	3	5	PROJ N	1ST ANGLE
					315	1000	0.8	4	6.5		
					1000	2000	1.2	4.5	7		
					2000	1500	1.5	5	7.5		

**MechProTech (Pty) Ltd.**  
 Mechanical Product and Technology Development for Industry

**HYDRAMAX HI-RATE 3x22.5 FLOCCULENT PLANT GA**

SCALE: 1:50 DRWG NO: **A1-08-0048-0001** SHEET 1 OF 1