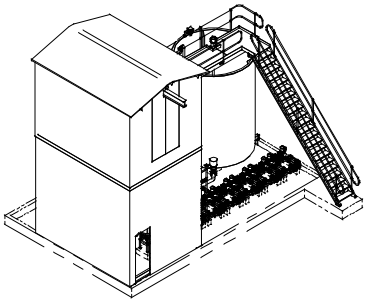
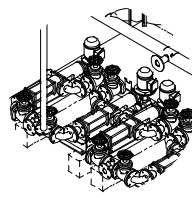
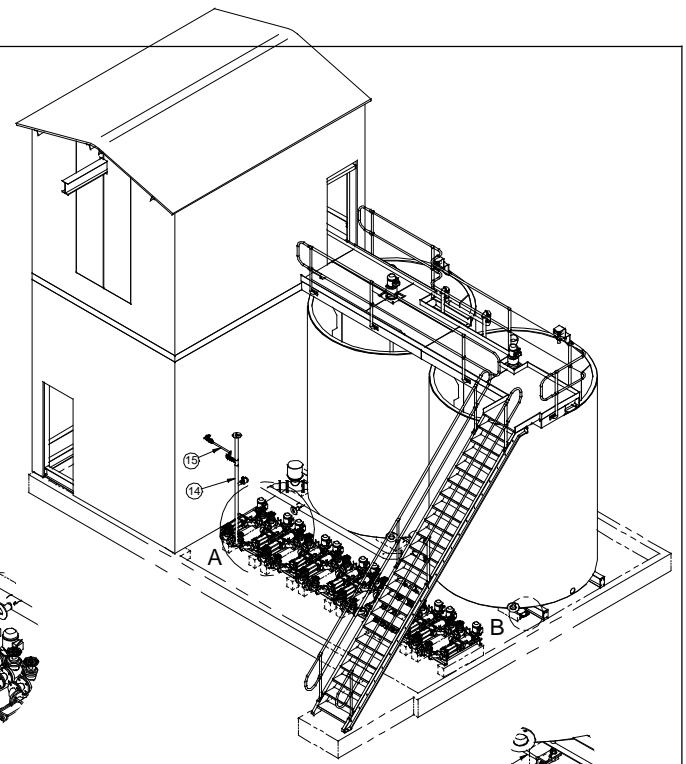
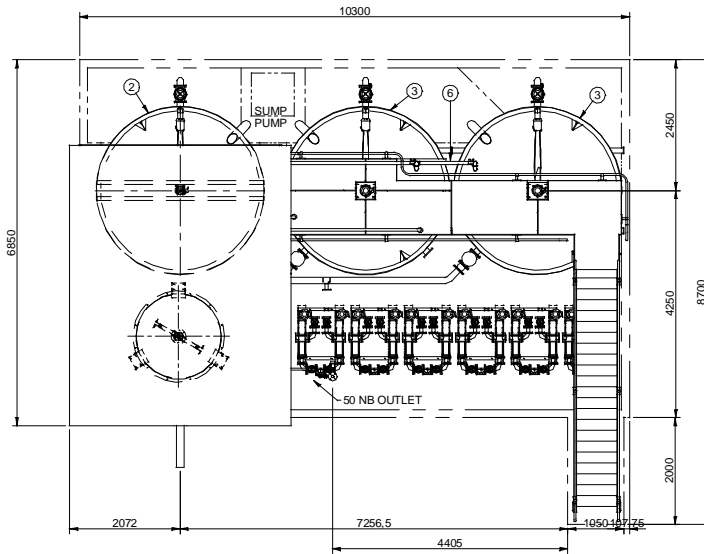


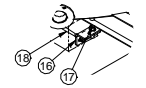
DO NOT SCALE



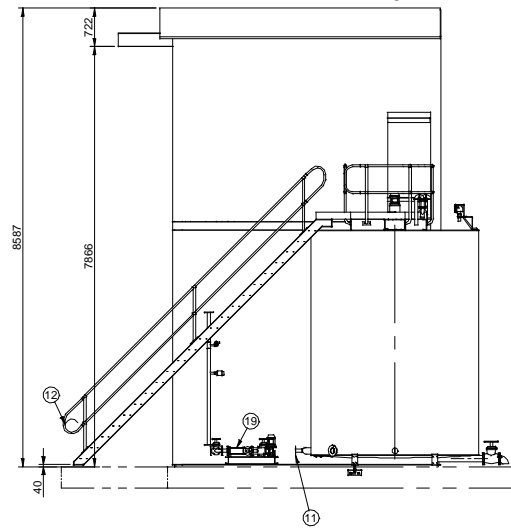
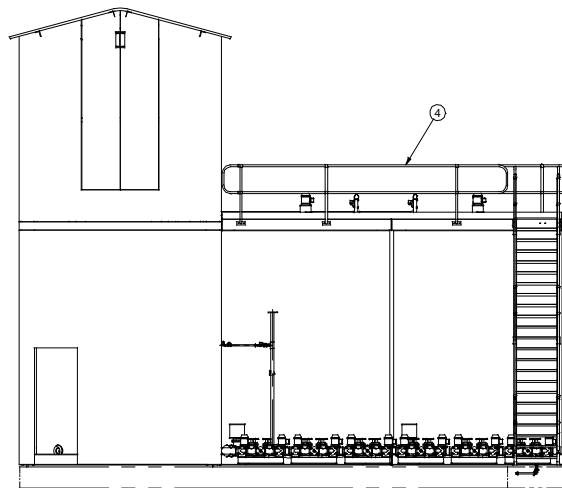
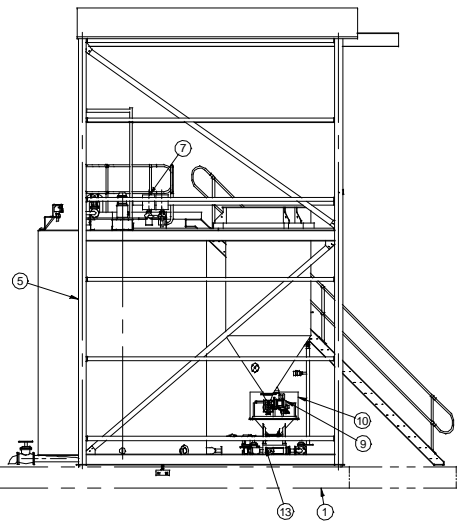
1:100



DETAIL A
1:25



DETAIL B
1:20



Item No	Document Number	Title	Qty	Mass
1	06-0055-0004	CIVILS	1	27778.6 kg
2	07-0068-0007	TANK ASSEMBLY - RHS	1	1325.5 kg
3	07-0005-0008	TANK ASSEMBLY LHS	2	3326.8 kg
4	06-0055-0085	WALKWAY ASSEMBLY	1	639.4 kg
5	06-0055-0172	STRUCTURE ASSEMBLY	1	2694.1 kg
6	06-0055-0020	WATER INLET PIPING ASSY	1	32.7 kg
7	06-0055-0105	DISTRIBUTION PIPE ASSY	1	103.4 kg
8*	06-0055-0066	REAGENT BIN ASSY	1	208.4 kg
9	06-0055-0049	SCREW FEEDER ASSY	1	48.2 kg
10	06-0055-0078	EDUCTOR ASSEMBLY	1	196.0 kg
11	07-0005-0015	HYDRATED REAGENT TANK PIPE	1	63.3 kg
12	06-0052-0080	STAIRWAY ASSEMBLY	1	342.1 kg
13	06-0055-0069	EDUCTOR STAND	1	0.0 kg
14	06-0055-0160	FLOC SUPPLY PIPE ASSY	1	
15	06-0055-0302	POST DILUTION PIPING ASSY	1	
16	RP-0020-0001	FOUNDATION BRACKET	12	39.4 kg
17	RP-0020-0002	FOUNDATION BOLT ASSY	12	16.2 kg
18	RP-0020-0003	FOUNDATION BOLT	12	12.7 kg
19	05-0065-0150	PUMP ASSEMBLY	6	1427.4 kg

FOR PIPING & INSTRUMENTATION SEE DRAWING A1-07-0068-0002

- NOTES
 1. ALL FASTENERS GR 8.8 HOT DIP GALVANISED
 2. ALL MOTORS 380 V 3 PHASE
 3. ALL CONTROL CIRCUITS 24V DC
 4. ALL INSTRUMENTATION 24V DC

REFERENCE	NO.	DESCRIPTION	DATE	CHECK	TOLERANCES				DRAWN		DT		MechProTech (Pty) Ltd. Mechanical Product and Technology Development for Industry
					ABOVE	INCL	MACH	FABR	CAS	DATE	2007/08/22	DATE	
					0.5	3	0.1	-	-	CHECKED			3X32.2 HYDRAMIX HI RATE CYCLIC HYDRATOR
					3	6	0.1	1	1	DATE	2007		
					6	30	0.2	1.5	2	ENGINEER			SCALE: 1:50 DRWG NO. A1-07-0068-0001 SHEET 1 OF 1
					30	120	0.3	2.5	3	DATE	2007		
					120	315	0.5	3	5	PROJ N	1ST ANGLE		
					315	1000	0.8	4	6.5	MATERIAL			
					1000	2000	1.2	4.5	7	NA			
					2000	3150	1.5	5	7.5				

PDF Created with deskPDF PDF Writer - Trial :: http://www.docudesk.com