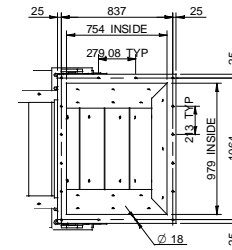
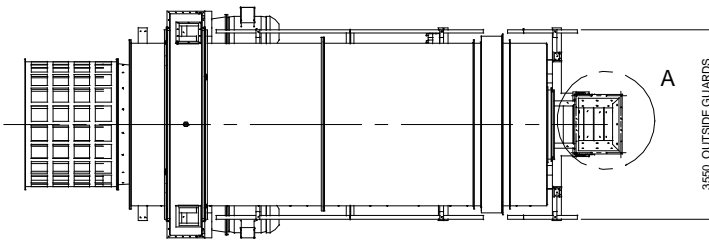
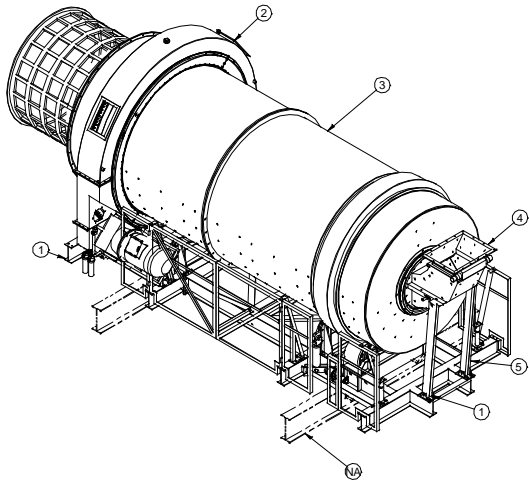
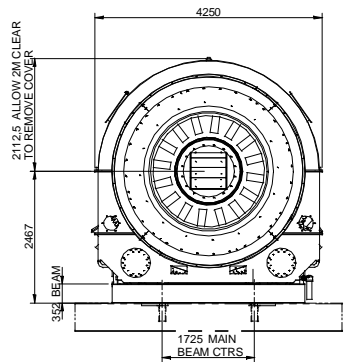


DO NOT SCALE

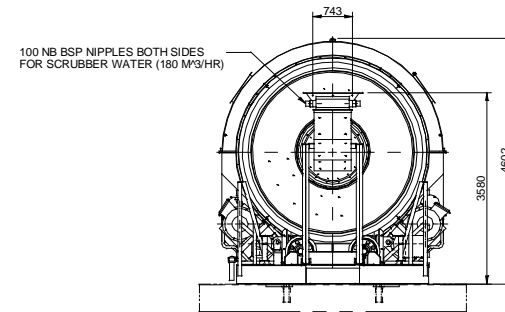
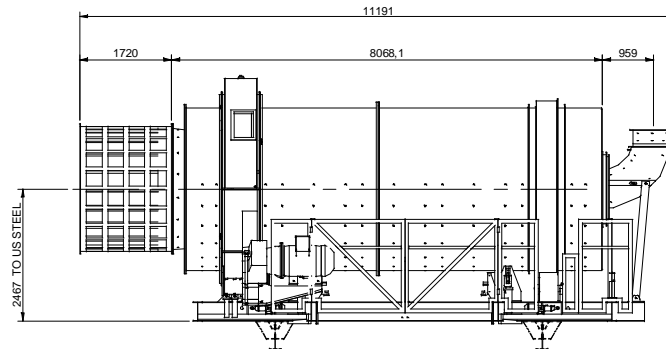


DETAIL A
1:20



LOADS ON EACH MAIN BEAM UNDER DRIVE BEARING

DEAD LOAD : TBA KN
ROTATING LOAD : TBA KN
PROCESS LOAD : TBA KN



LOADS ON EACH NON DRIVE SIDE BEAM END PLATE

DEAD LOAD : TBA KN
ROTATING LOAD : TBA KN
PROCESS LOAD : TBA KN

NOTES

1. ROTATIONAL SPEED OF SCRUBBER = 15 RPM
2. TWO OFF DRIVE MOTORS 160 KW 600V EACH
3. TWO DRIVE MOTORS TO BE CONNECTED TO A SINGLE SOFT STARTER
4. TWO OFF PUMP MOTORS 2.2 KW EACH
5. TWO OFF HP PUMP MOTORS 1.5 KW EACH
6. SCRUBBER SUPPLIED CW RUBBER LINERS
7. MAX LIFT FOR MAINTENANCE - GEARBOXES AT 1.5 TONS EACH

Item Number	Document Number	Title	Quantity	Mass
1	04-0074-5024	BASE FRAME ASSEMBLY	1	3941.5 kg
2	04-0074-4052	DRIVE ASSEMBLY	1	8461.0 kg
3	04-0074-4002	DRUM ASSEMBLY	1	35419.8 kg
4	04-0074-5018	INLET SPOUT ASSEMBLY	1	822.8 kg
5	04-0074-5019	PIVOT ARM	1	152.8 kg
6*			1	

REFERENCE	NO.	DESCRIPTION	DATE	CHECK	TOLERANCES		DRAWN		DT		MATERIAL
					INCL	MACH	FABR	CAS	DATE	BY	
					0.5	3	0.1	-	CHECKED	2008/08/07	
					3	6	0.1	1	DATE	200	
					6	30	0.2	1.5	ENGINEER		
					30	120	0.3	2.5	DATE	200	
					120	315	0.5	3	PROJ N	1ST ANGLE	
					315	1000	0.8	4	MATERIAL		
					1000	2000	1.2	4.5	mat		
					2000	1500	1.5	5			

MechProTech (Pty) Ltd.
Mechanical Product and Technology Development for Industry

**3M DIAMETER X 8 M LONG SCRUBBER CW
320 KW DRIVE**

SCALE: 1: DRG NO: **A1-08-0045-4012** REV: 0 SHEET 1 OF 1